



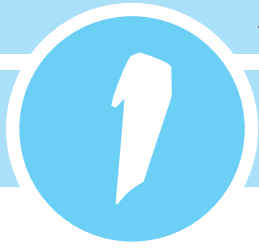
ALGEBRA



a people sign up for a club membership on Monday.

$(a + 1)$ people sign up for the club membership on Tuesday, and so on.

1. How many people in all have signed up for the membership by the end of Sunday? Express your answer in terms of a .
2. If a total of 105 people have signed up for the club membership over the whole week, how many people have signed up for the membership on Monday?



ANSWER TO

ALGEBRA

1. $a + (a + 1) + (a + 2) + (a + 3) + (a + 4) + (a + 5) + (a + 6)$
 $= (7a + 21)$ people

2. $7a + 21 = 105$
 $7a = 105 - 21$
 $= 84$
 $a = 84 \div 7$
 $= 12$ people

